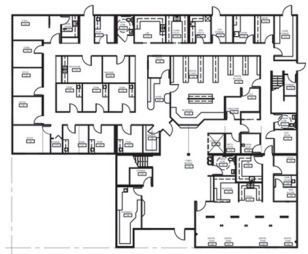


Second Floor



First Floor

PROJECT:

Shoalwater Bay Wellness Clinic

PROJECT DETAILS:

This two-story medical building was designed to blend in with the existing on-campus which included a variety of exterior sidings and color schemes. Due to the fact that the building is sited less than 200 feet from the Pacific Ocean, the clinic had to be engineered and built to meet a 100 mph, Exposure D wind-rating. The structure was the most complex building that Pacific Mobile has ever built and features an elevator and lifetime warrantee fiberglass exterior doors (due to the extreme rust-conditions common in sea communities).

13121 sq. ft. Two Story Office
Shoalwater Bay Wellness Center

