



## Project Bulletin

### *St. Madeleine Sophie Catholic Church*

#### Project

To construct and install (3) 1,792 sq. ft. permanent classroom buildings, in a campus-style layout with a grassed-in courtyard.

#### Project Details

These classrooms featured roof dormers, large front porches, and were installed "ground-level" to allow access via concrete sidewalks.

#### Time to Complete

The project started in April 2005 and was completed in September 2005.

#### Special Features

This office building featured items such as painted sheetrock interior walls, painted interior doors/window trims with accent walls, 1/8" block tile flooring, vaulted sidewalls with T-grid suspended ceilings, lap-siding with board & batt siding.

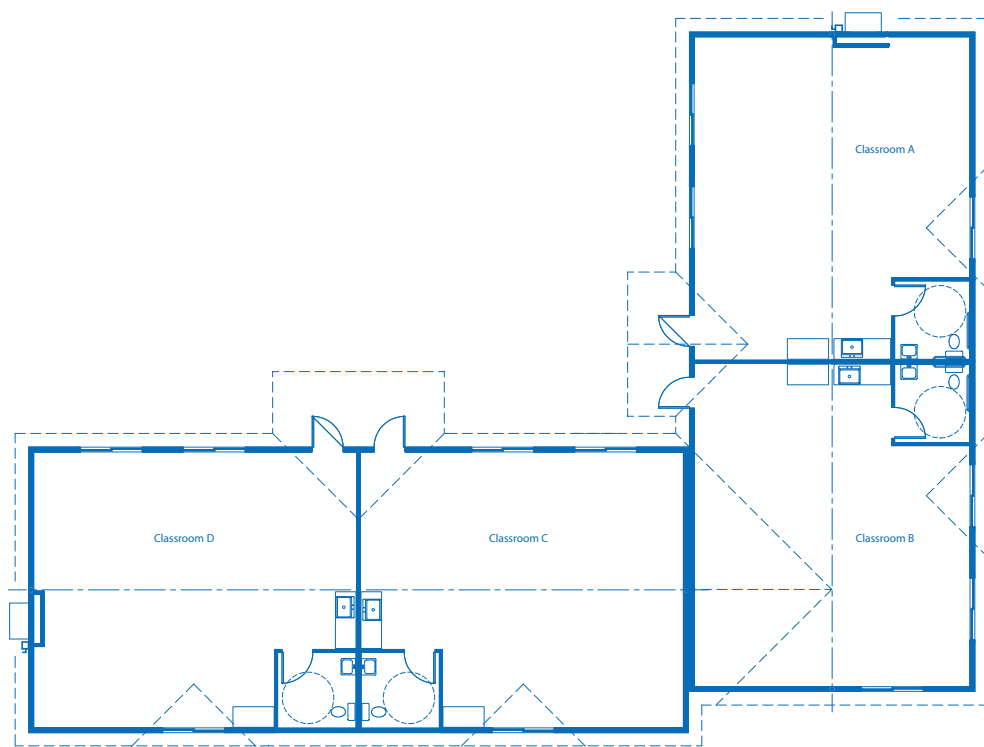
# St. Madeleine Sophie



PO Box 1404  
Chehalis WA 98532-0350

## Features:

- (3) 1, 792 sq. ft.
- design-built project
- classrooms
- roof dormers
- handicapped restroom
- modular construction
- permanent foundation



Feasibility Studies • Architectural Design • Project Management

*Experience the difference!*

[www.pacificmobile.com](http://www.pacificmobile.com)

For Information Call: **800.225.6539**

Serving the West Coast and the Northwest - Locations:

Seattle, WA

Chehalis, WA

Pasco, WA

Northern CA

Boise, ID

Portland, OR

Eugene, OR

Southern CA