



## Project Bulletin

### *Asante*

#### Project

To construct and install a custom 4,990 sq. ft. permanent office building with a site-installed roof mansard with columns.

#### Project Details

This building was built as additional office space for the hospital, and was installed ground-level (access to the building via concrete sidewalks).

#### Time to Complete

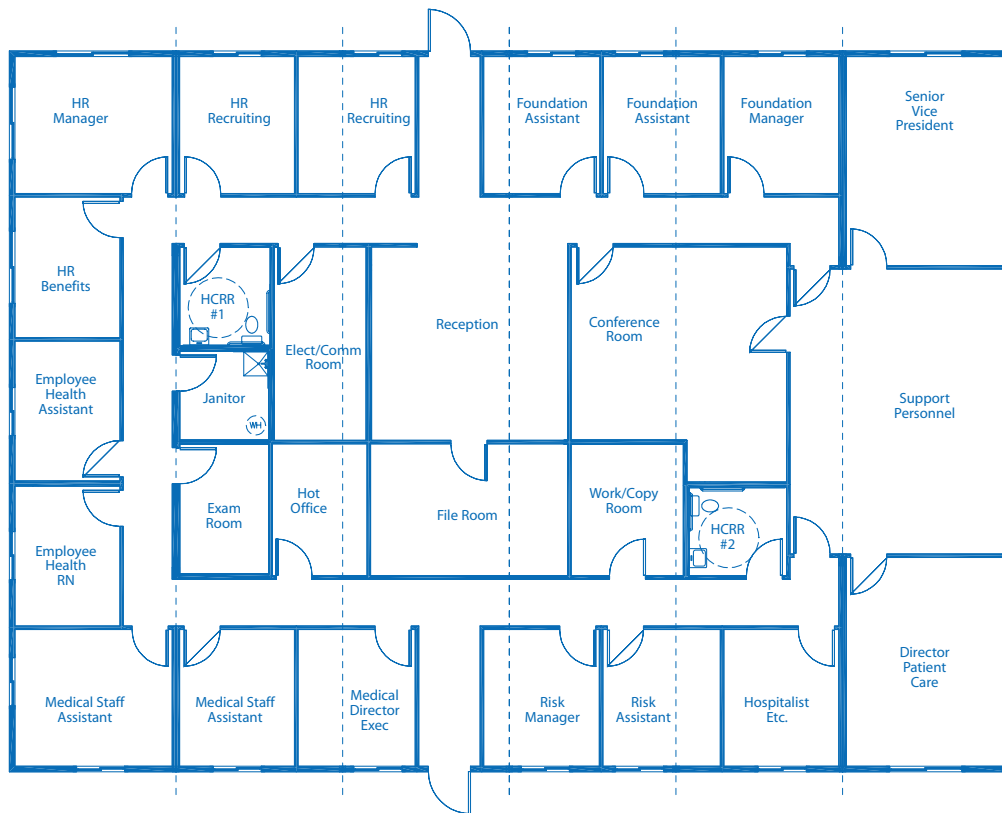
The project started in May 2005 and completed in November 2005.

#### Special Features

This office building featured items such as painted sheetrock interior walls, painted interior doors/window trims with accent walls, 26 ounce nylon carpeting, T-grid suspended ceiling with recessed lighting, and site-installed "Dryvit" stucco siding with large roof mansards.

**Features:**

- 4,990 sq. ft.
- reception counter
- waiting area
- executive's offices
- 18 Offices
- conference room
- work/copy room
- file room
- exam room
- restrooms



**Feasibility Studies • Architectural Design • Project Management**

*Experience the difference!*

[www.pacificmobile.com](http://www.pacificmobile.com)

**For Information Call: 800.225.6539**

Serving the West Coast and the Northwest - Locations:

Seattle, WA

Chehalis, WA

Pasco, WA

Northern CA

Boise, ID

Portland, OR

Eugene, OR

Southern CA